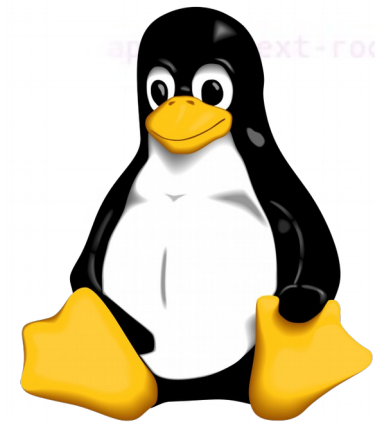


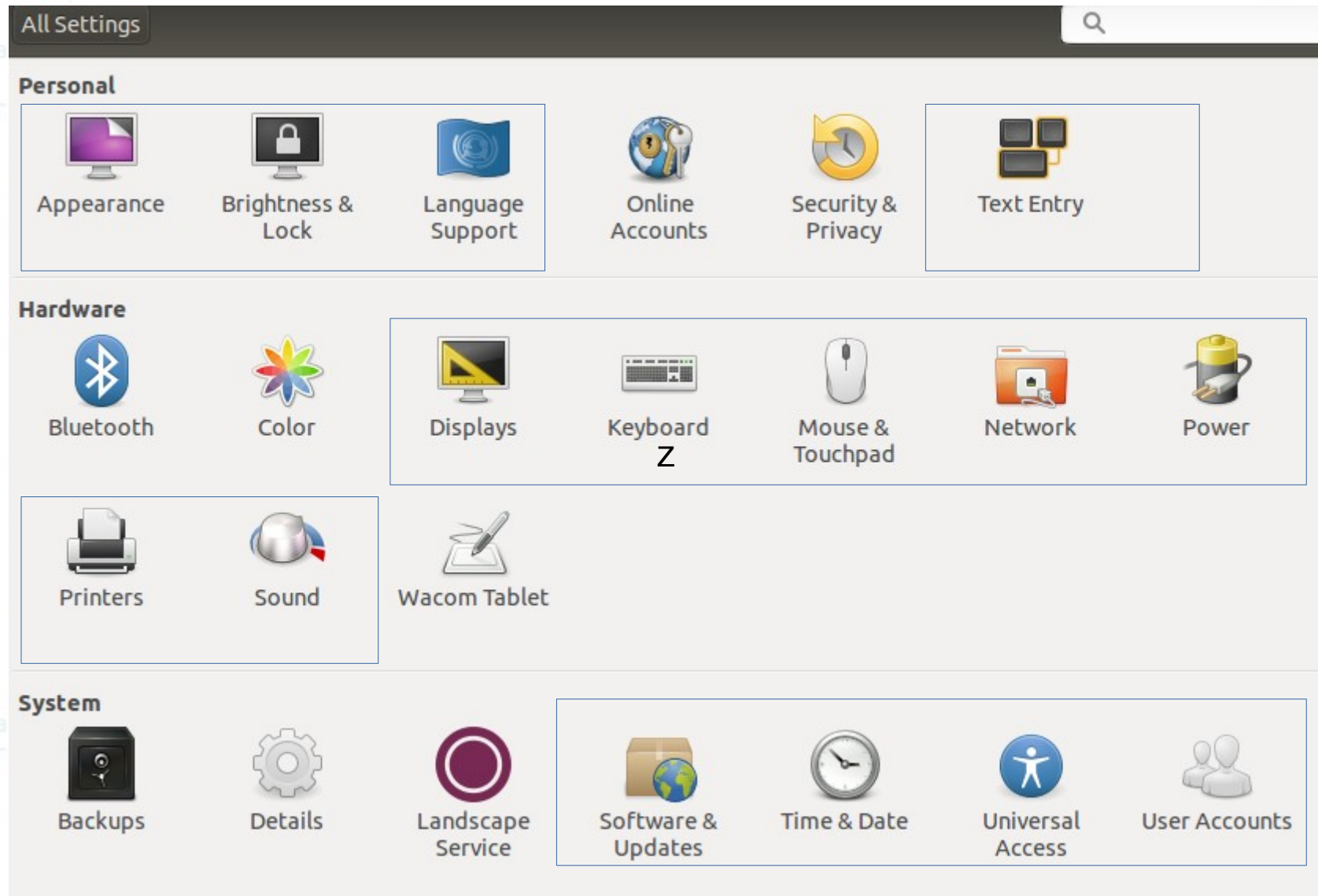
Linux

Configuration and applications

Lecture №3 (версия 1.0)



System Settings



adduser / useradd

adduser and addgroup add users and groups to the system according to command line options and configuration information in /etc/adduser.conf. They are friendlier front ends to the low level tools like useradd, groupadd and usermod programs, by default choosing Debian policy conformant UID and GID values, creating a home directory with skeletal configuration, running a custom script, and other features.

adduser username

```
sent"/>
fish.web.present
<!-- do not for
root}" else="$gfv
app.context-root]
resent">
b]"/>
```

Task 01

- Create user1 with graphical interface
- Create user2 in terminal
- Log in into tty1 as user2
- Log in into tty2 as user2
- Use command *who* to see who is online
- Log in into graphical interface as user1
- Switch between them
- Change background image for the user1

```
sent"/>  
fish.web.present
```

```
<!-- do not forg
```

```
oot)" else="$ {gfv
```

```
app.context-root
```

```
resent">
```

```
b]"/>
```

Task 02

- Create directory `/home/user1/Secret`
- Create a document in the `Secret` directory
- Log in as a `user2` and try to see this document
- Switch to the `user1` and secure file from other users

```
resent"/>  
fish.web.present
```

```
<!-- do not forg
```

```
oot}" else="{gf
```

```
app.context-root
```

```
resent">
```

```
b]"/>
```

Learning applications

- LibreOffice Writer/Calc/Impress/Draw/Math
- Calculator
- Disks
- Document/Image Viewers
- Screenshot
- Startup applications
- Ubuntu Software Center

```
sent"/>  
fish.web.present
```

```
<!-- do not forg
```

```
oot}" else="$gfv
```

```
app.context-root
```

```
resent">
```

```
b]"/>
```